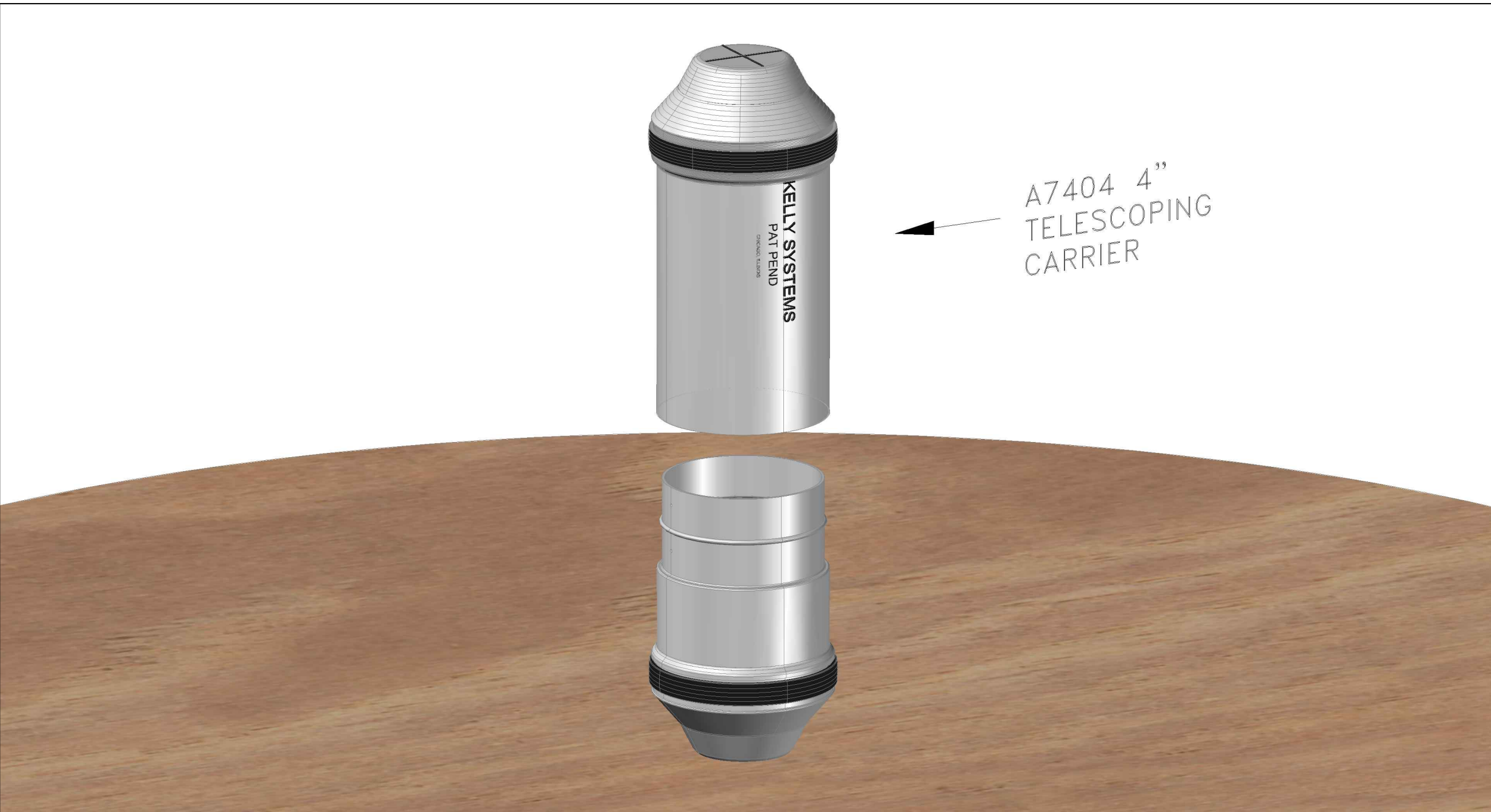
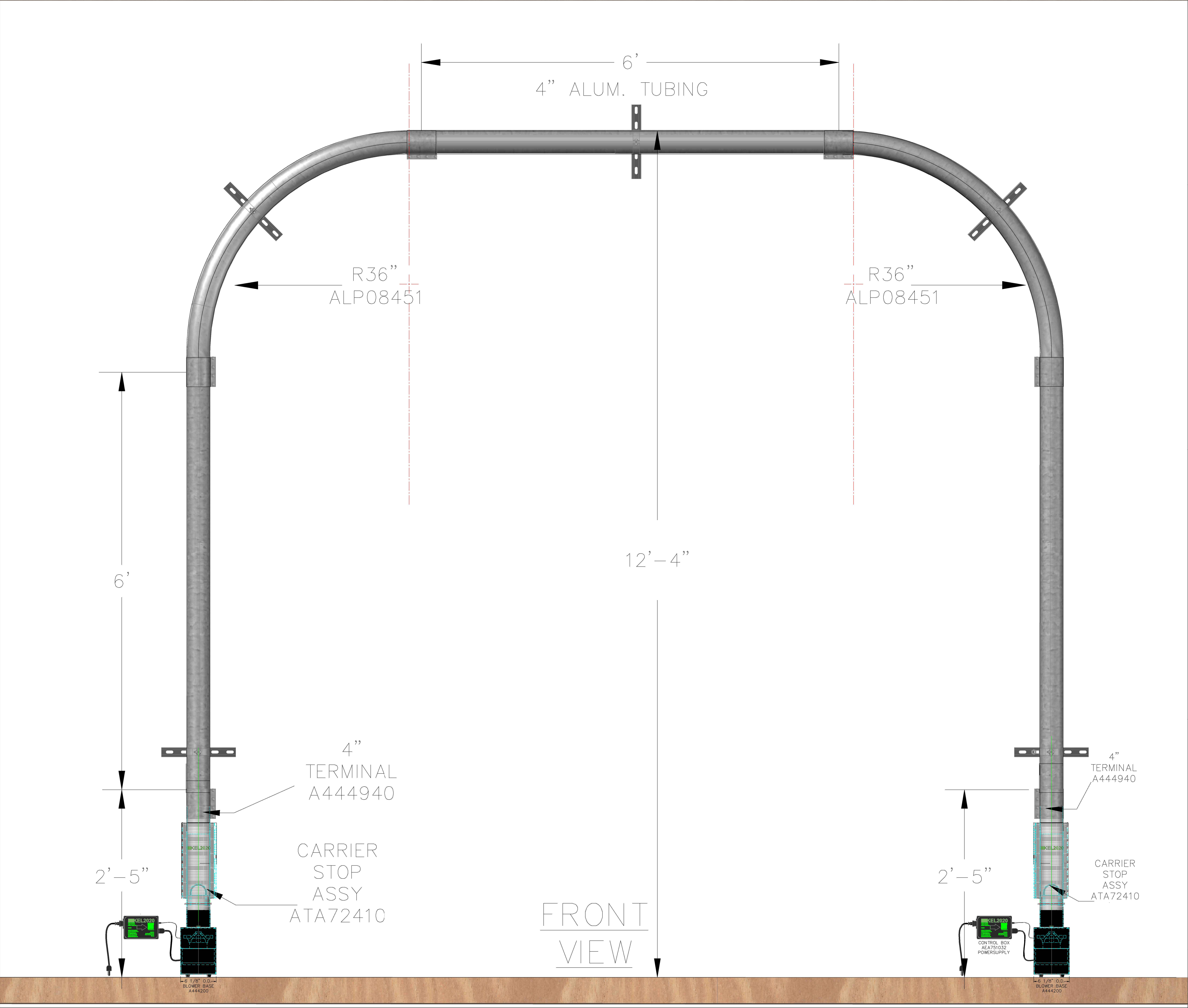
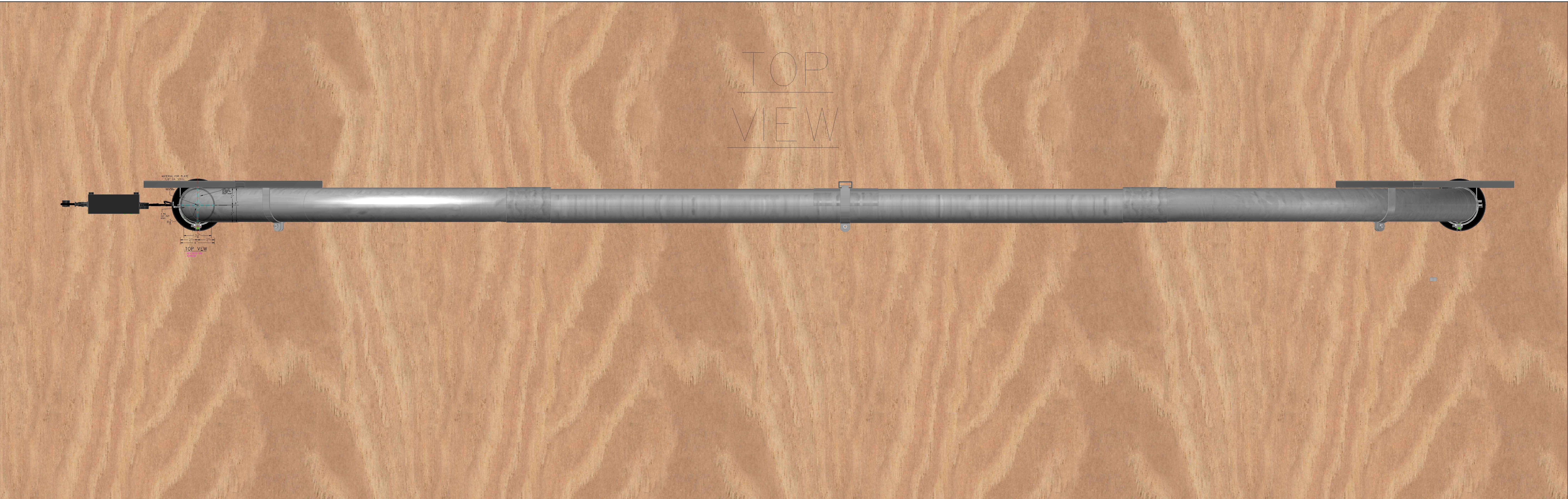


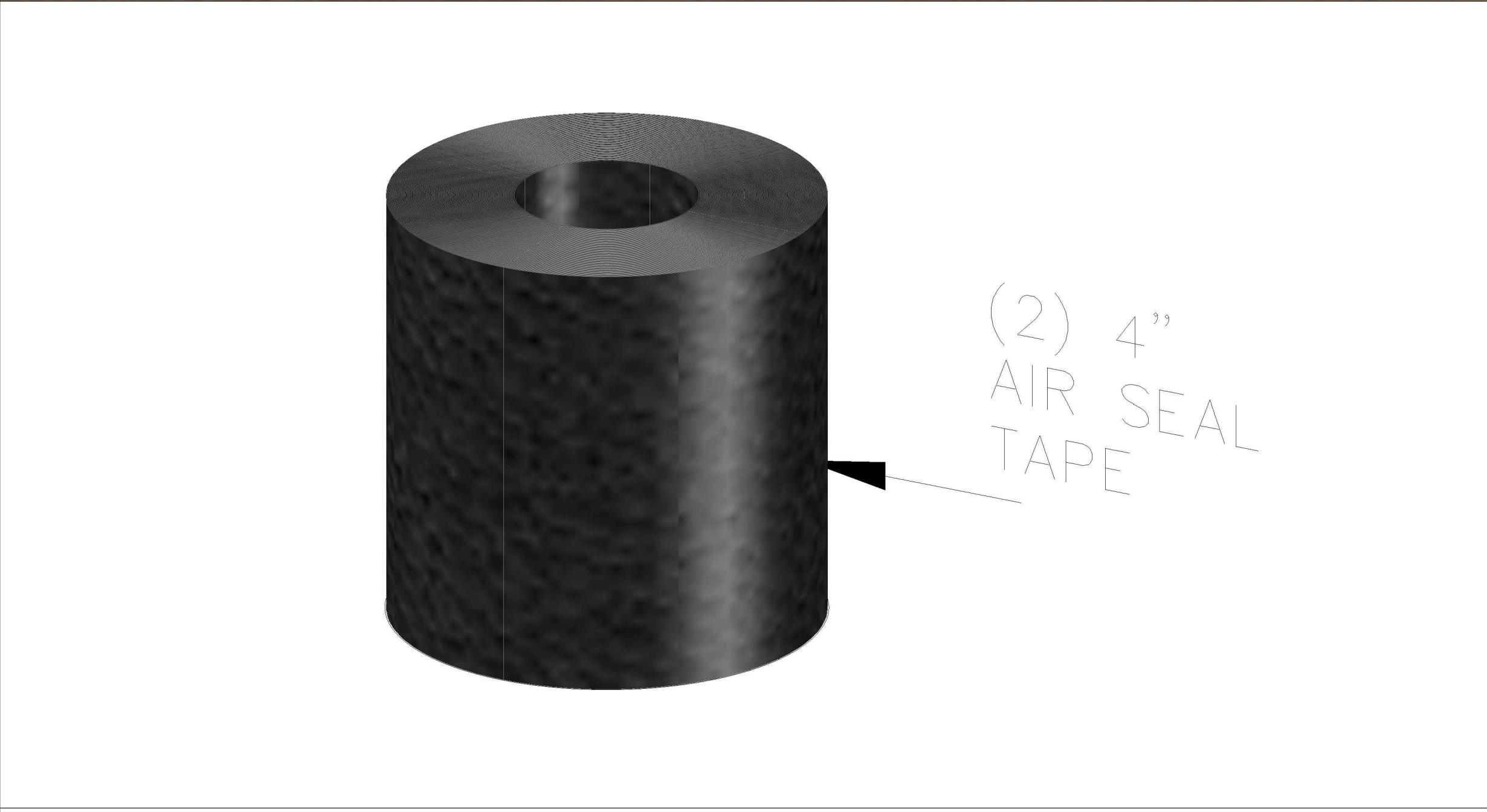
SHEET NO.:



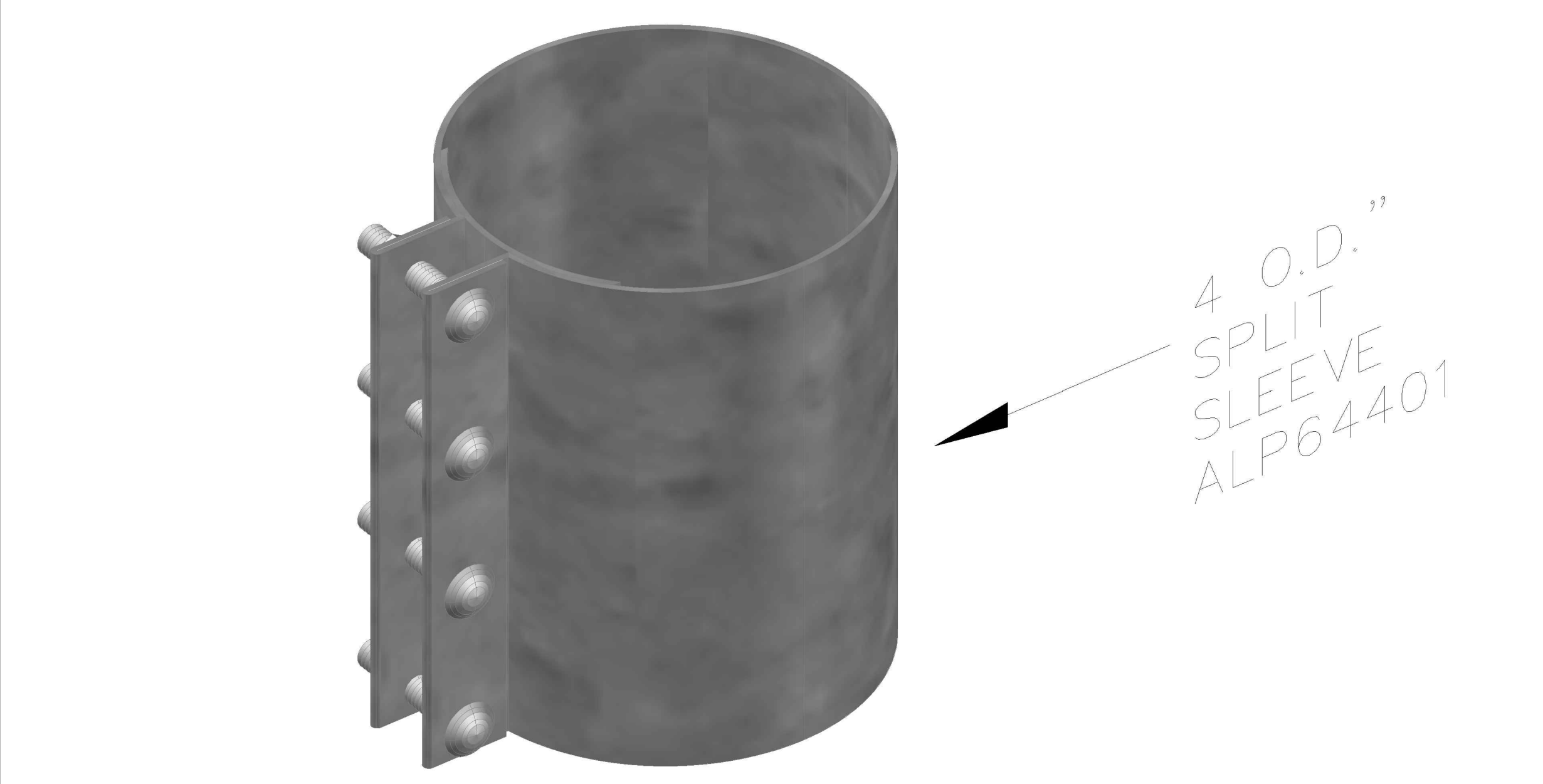




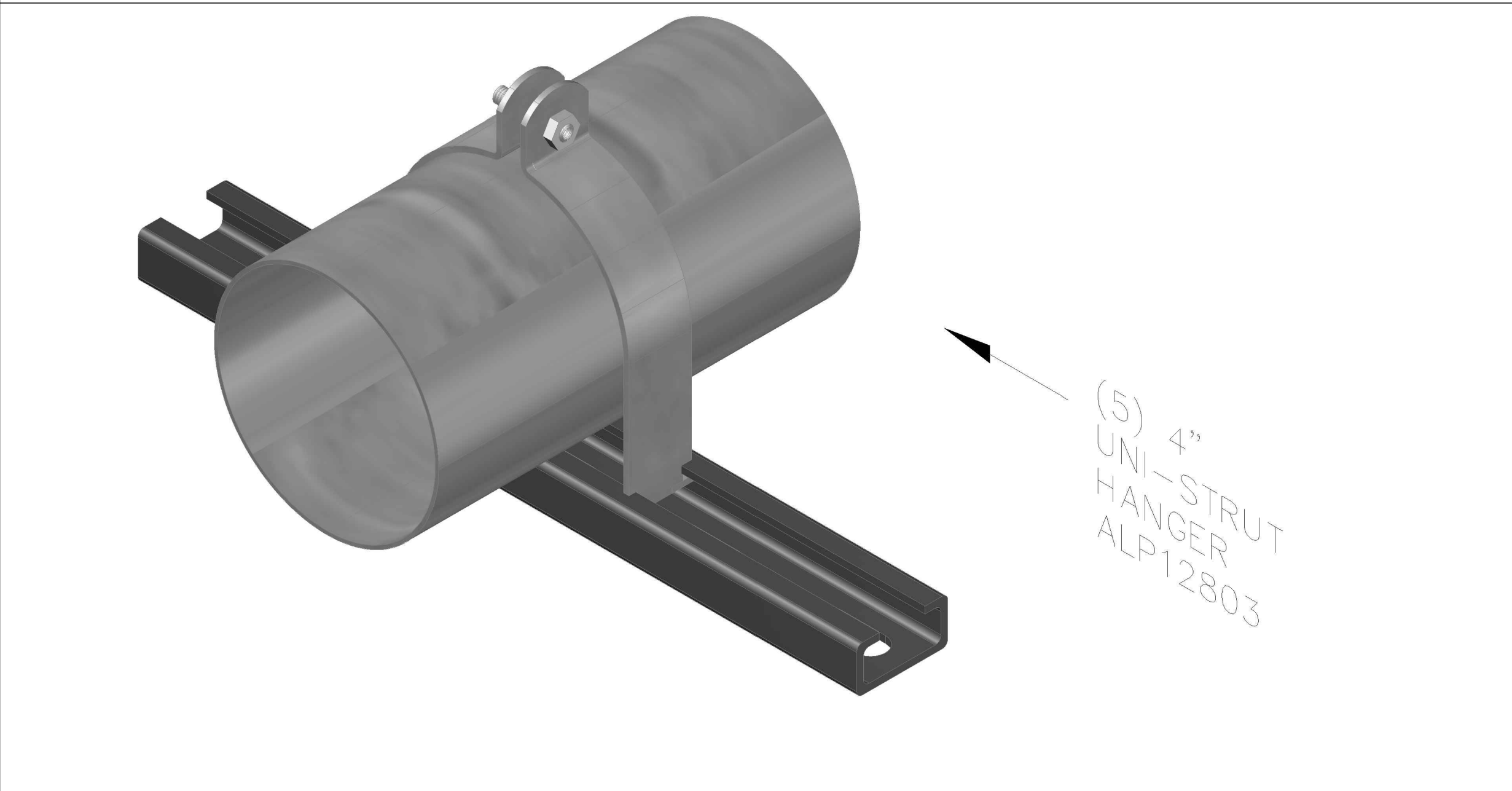
A7404 4" TELESCOPING CARRIER



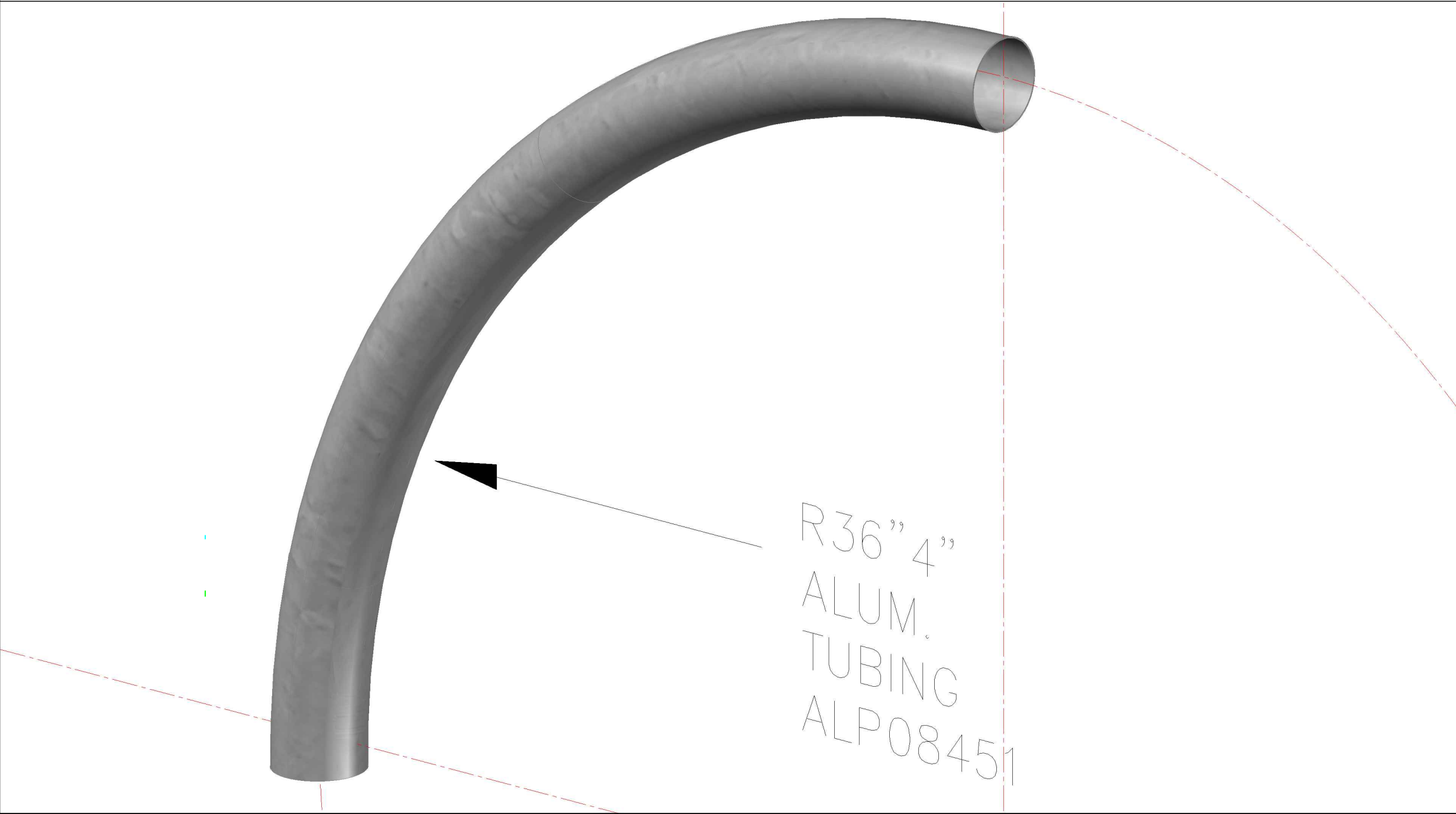
(2) 4" AIR SEAL TAPE



4 O.D. " SPLIT SLEEVE ALP64401



(5) 4" UNI-STRUT HANGER ALP12803



R36" 4" ALUM. TUBING ALP08451

THIS DRAWING AND THE DATA, INFORMATION AND CONSTRUCTION FEATURES CONTAINED HEREIN ARE THE CONFIDENTIAL AND PROPRIETARY PROPERTY OF KELLY SYSTEMS, INC., AND ITS AFFILIATES AND IS ISSUED IN STRICT CONFIDENCE FOR SPECIFIED PURPOSES ONLY AND MAY NOT BE COPIED, DISCLOSED OR OTHERWISE USED IN ANY MANNER FOR ANY OTHER PURPOSE WITHOUT THE EXPRESS WRITTEN CONSENT OF KELLY SYSTEMS, INC. COPYRIGHT © KELLY SYSTEMS, INC. ALL RIGHTS RESERVED.

SCALE: ?

KELLY DWG NO.:

APS558404

KELLY ADDRESS:

**KELLY systems**  
422 N. WESTERN CHICAGO, IL. 60612 SINCE 1904  
312/733-3224 FAX 312/733-6971

PROJECT:

4" KEL2020 SYSTEM-AMAZON KIT

ISSUE:

DRAWING TITLE:

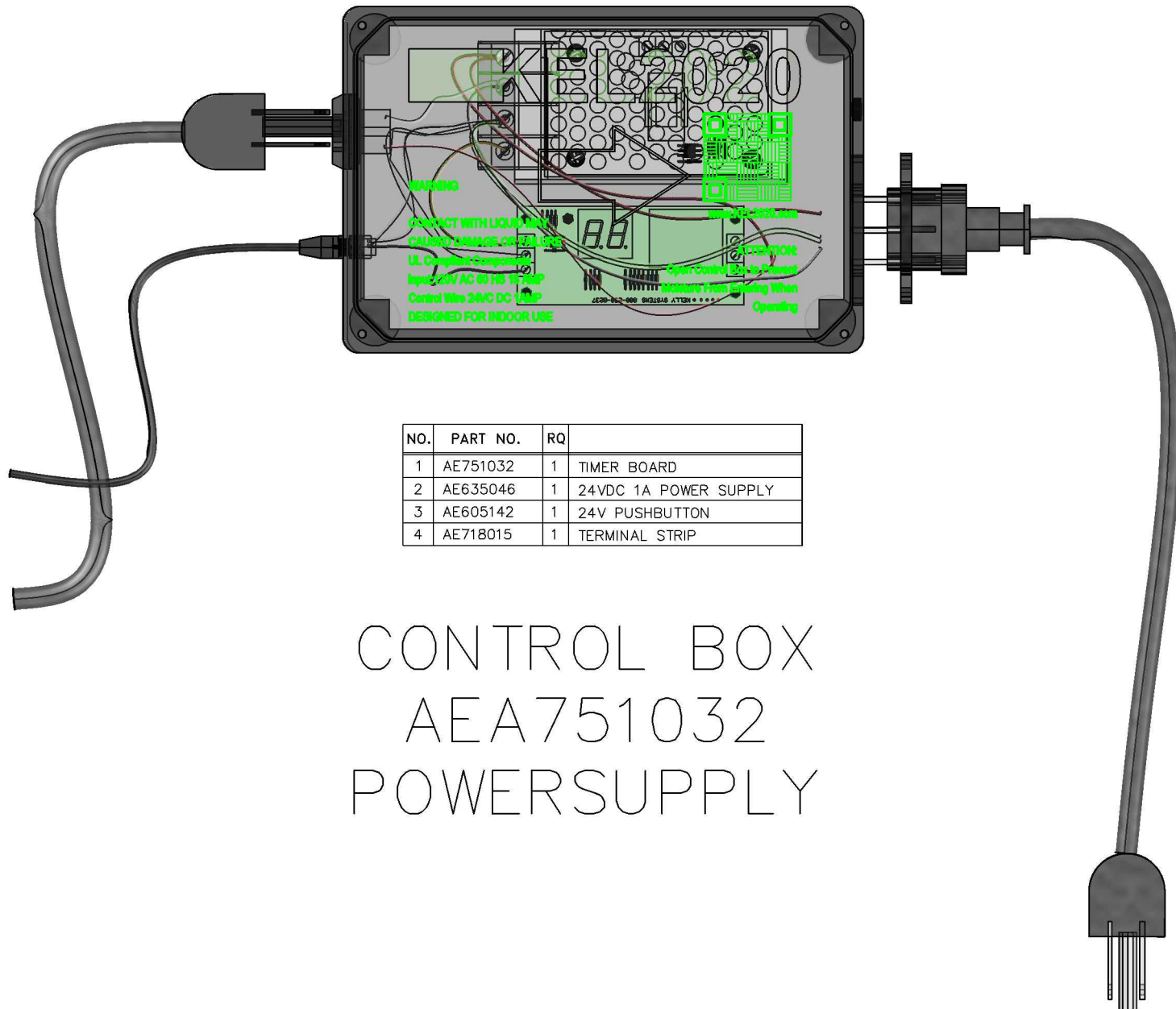
4" KEL2020 SYSTEM-AMAZON KIT

JOB NO: DATE: 08/06/24 DWG. BY: MTA  
TRACKING NO.:

SHEET NO.:

(2)





NO.	PART NO.	RQ	
1	AE751032	1	TIMER BOARD
2	AE635046	1	24VDC 1A POWER SUPPLY
3	AE605142	1	24V PUSHBUTTON
4	AE718015	1	TERMINAL STRIP

# CONTROL BOX AEA751032 POWERSUPPLY

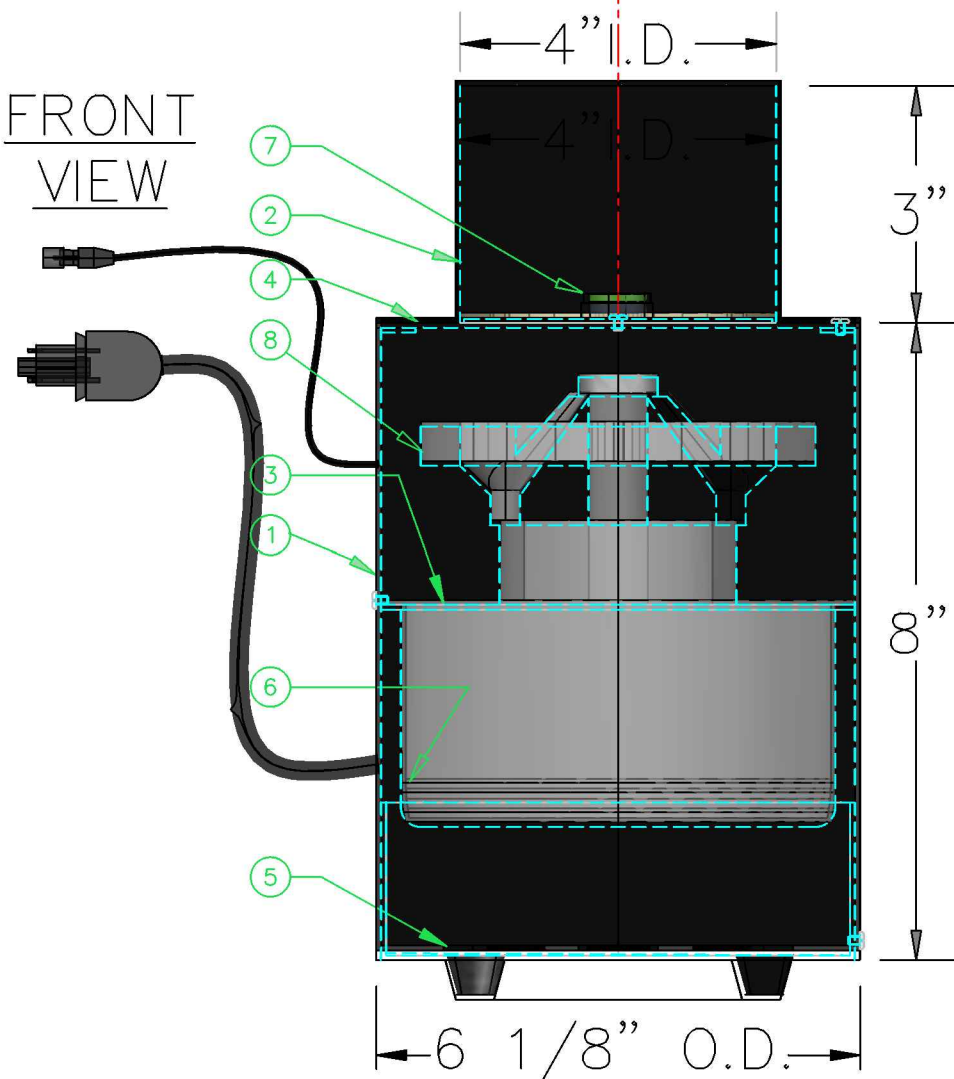
4" KEL2020 SYSTEM-AMAZON KIT  
CONTROL BOX POWER SUPPLY

**KELLY systems**  
INCORPORATED  
422 N. WESTERN  
CHICAGO, IL. 60612  
312/733-3224 FAX 312/733-6971  
SINCE 1904

Drwn	08/06/24 MTA
Rev.	AEA751032
No. APS558404-3	

NO.	PART NO.	RQ	DESCRIPTION
1	K2020-ALP64624	1	SLEEVE 6 1/8" O.D. X 7 15/16"
2	K2020-ATP64428	1	SLEEVE 4" I.D. X 3"
3	K2020-ATP01457	1	MOTOR PLATE
4	K2020-ATP01458	1	TOP PLATE
5	K2020-ATP01459	1	BOTTOM PLATE
6	K2020-ALP57405	1	NIPPLE 6" O.D. X 2"
7	K2020-AE605622	1	GREEN PUSHBUTTON
8	K2020-AE484022	1	MOTOR

FRONT  
VIEW

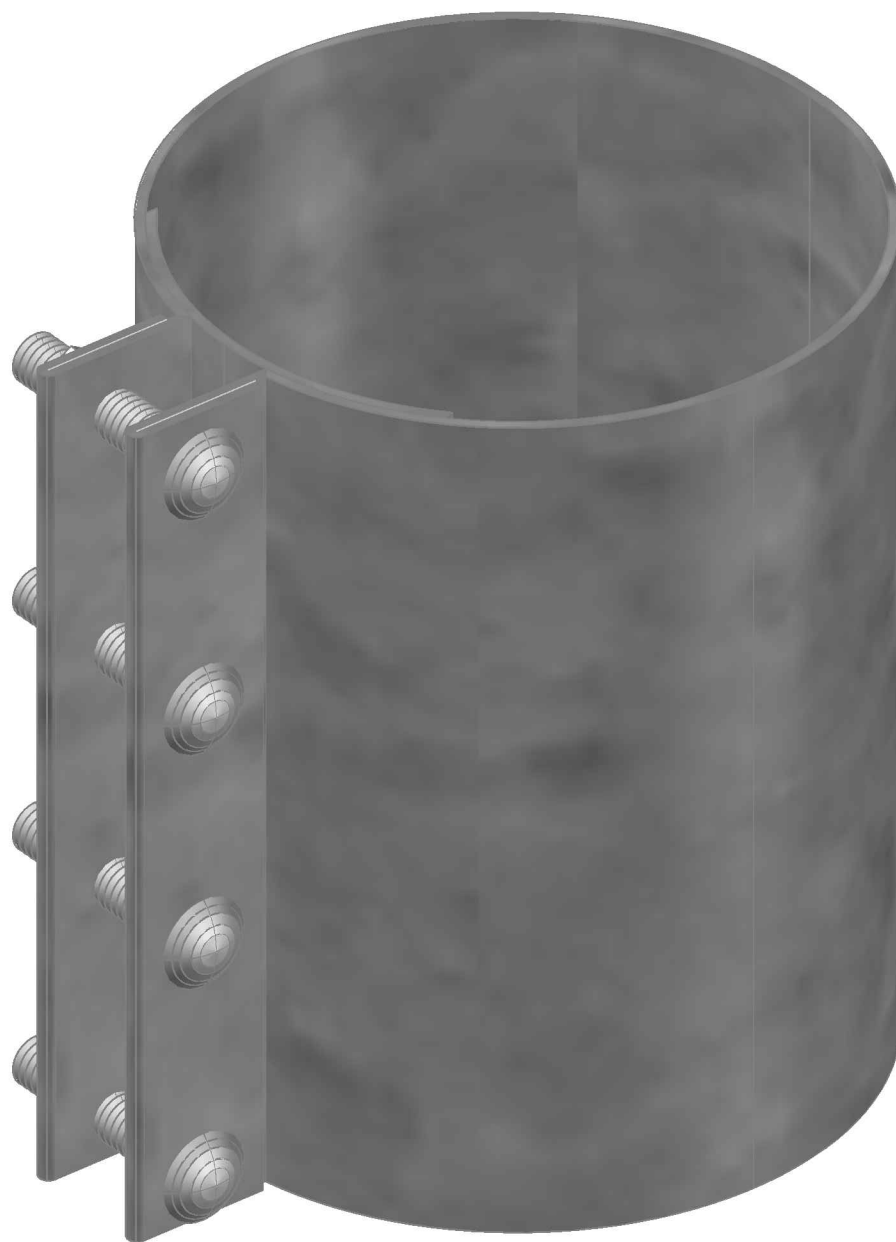


BLOWER BASE  
A444200

4" KEL2020 SYSTEM-AMAZON KIT  
BLOWER BASE

**KELLY systems**  
INCORPORATED  
422 N. WESTERN  
CHICAGO, IL. 60612  
312/733-3224 FAX 312/733-6971  
SINCE 1904

Drwn	08/06/24 MTA
Rev.	A444200
No.	APS558404-4

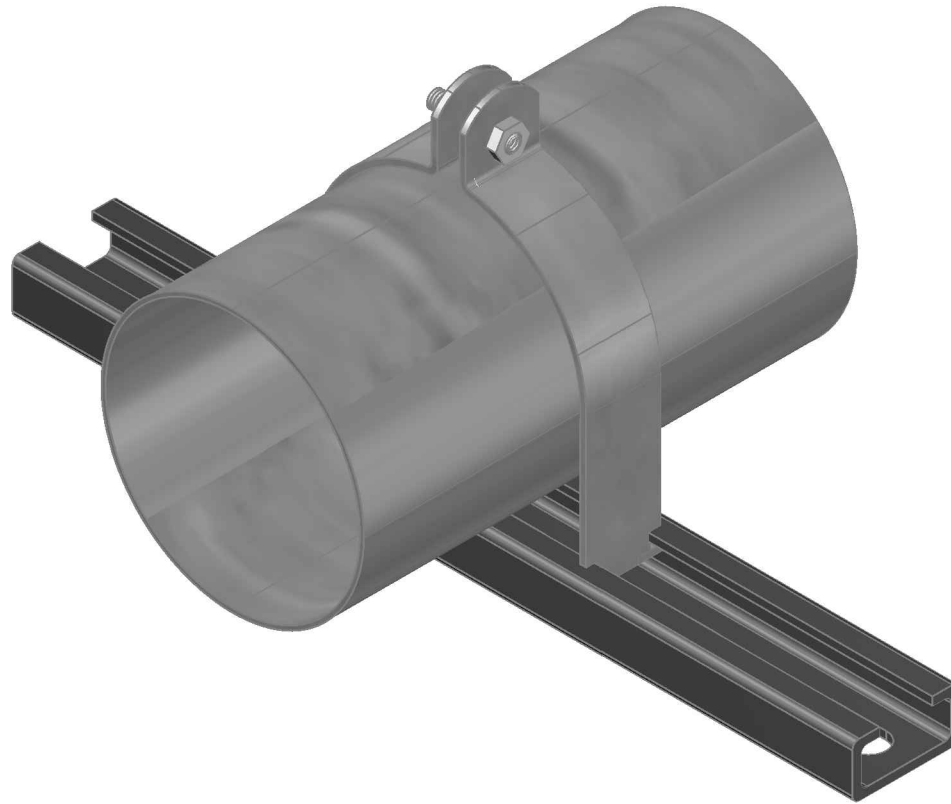


4" O.D.  
SPLIT  
SLEEVE  
ALP64401

4" KEL2020 SYSTEM-AMAZON KIT  
SPLIT SLEEVE

**KELLY** systems  
INCORPORATED  
422 N. WESTERN  
CHICAGO, IL. 60612  
312/733-3224 FAX 312/733-6971  
SINCE 1904

Drwn	08/06/24 MTA
Rev.	ALP64401
No.	APS558404-5

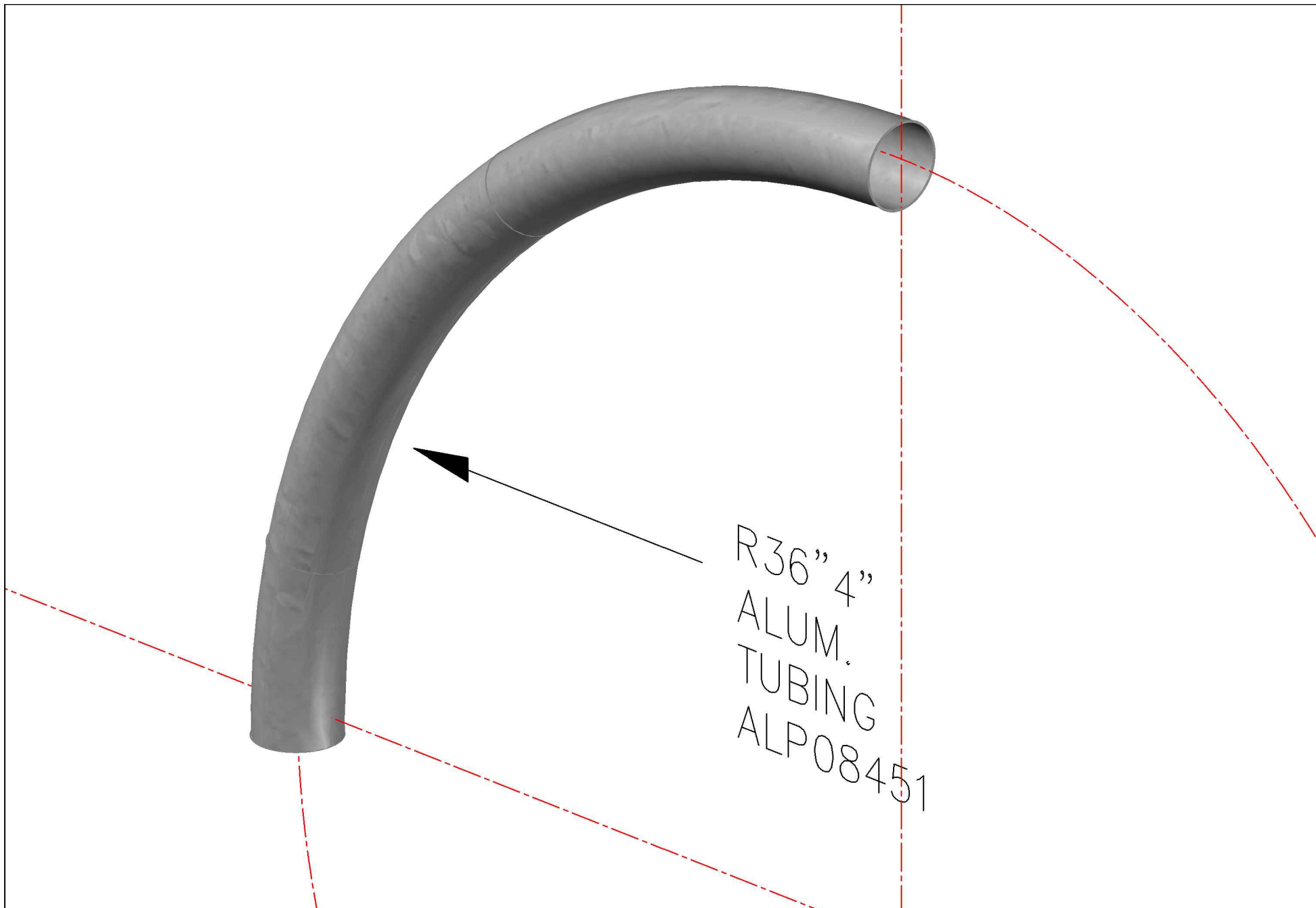


(5) 4"  
UNI-STRUT  
HANGER  
ALP12803

4" KEL2020 SYSTEM-AMAZON KIT  
UNI-STRUT

**KELLY** systems  
INCORPORATED  
422 N. WESTERN  
CHICAGO, IL. 60612  
312/733-3224 FAX 312/733-6971  
SINCE 1904

Drwn	08/06/24 MTA
Rev.	ALP12803
No.	APS558404-6



4" KEL2020 SYSTEM-AMAZON KIT

**KELLY systems**  
INCORPORATED  
422 N. WESTERN  
CHICAGO, IL. 60612  
312/733-3224 FAX 312/733-6971  
SINCE 1904

Drwn	08/06/24 MTA
Rev.	?
No.	APS558404-7



(2) 4"  
AIR SEAL  
TAP E

4" KEL2020 SYSTEM-AMAZON KIT

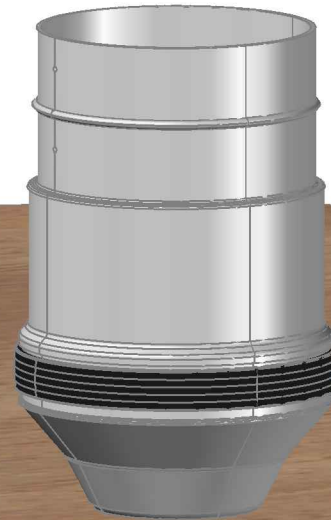
**KELLY systems**  
INCORPORATED  
422 N. WESTERN  
CHICAGO, IL. 60612  
312/733-3224 FAX 312/733-6971  
SINCE 1904

Drwn	08/06/24 MTA
Rev.	?
No.	APS558404-8





← A7404 4"  
TELESCOPING  
CARRIER



4" KEL2020 SYSTEM-AMAZON KIT

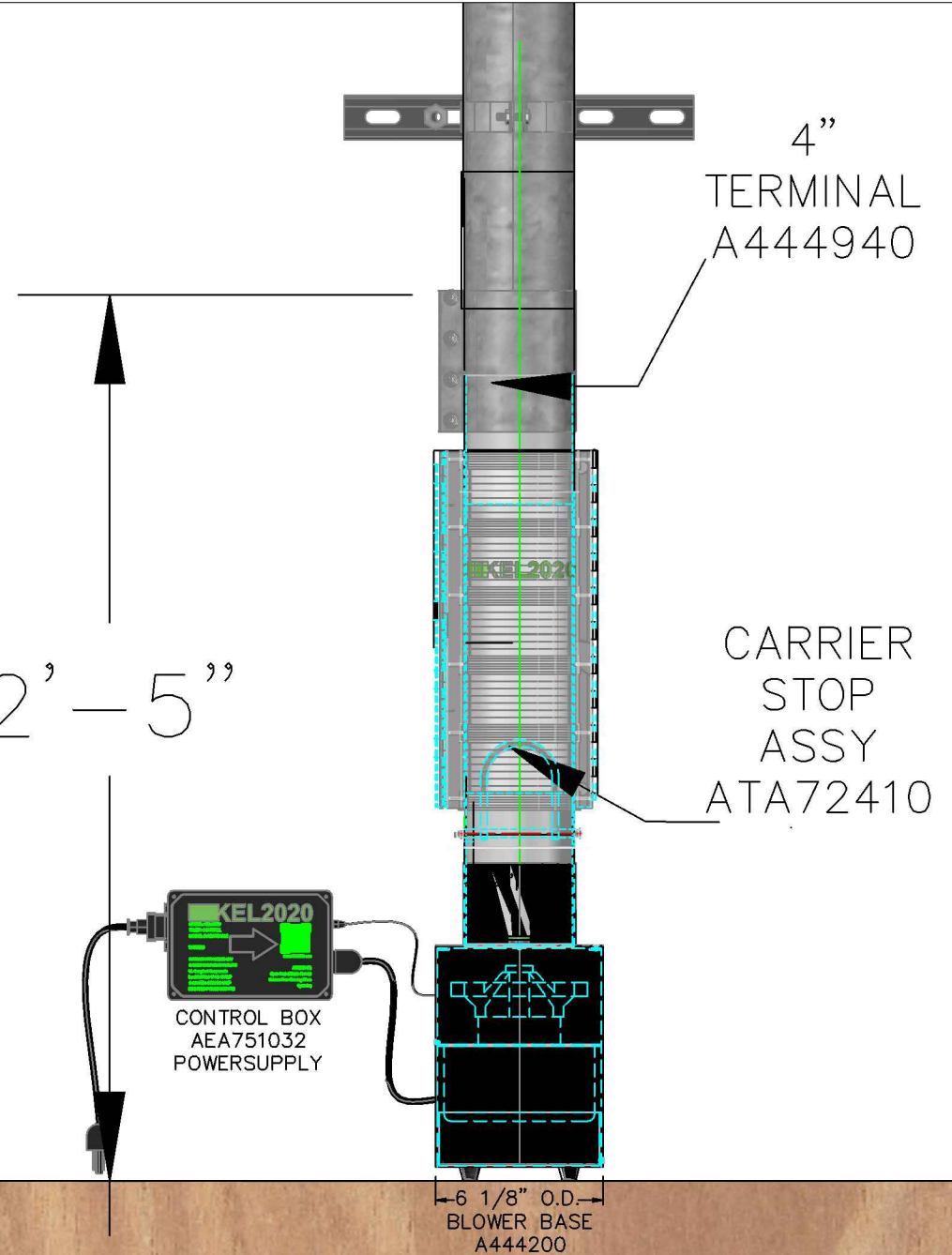
**KELLY systems**  
INCORPORATED  
422 N. WESTERN  
CHICAGO, IL. 60612  
312/733-3224 FAX 312/733-6971  
SINCE 1904

Drwn	08/06/24 MTA
Rev.	?
No.	APS558404-9



NO.	PART NO.	RQ	DESCRIPTION
1	A444940	1	4" TERMINAL
2	A444200	1	BLOWER
3	AEA751032	1	CONTROL BOX

2' - 5"



# 4" KEL2020 SYSTEM-AMAZON KIT

**KELLY systems**  
INCORPORATED  
 422 N. WESTERN  
 CHICAGO, IL. 60612  
 312/733-3224 FAX 312/733-6971

Drwn	08/06/24 MTA
Rev.	?
No.	APS558404-10