

TRUCK GUARD HOUSE DRIVE THRU SPEC.

DRIVE THRU TRUCK LANES PNEUMATIC TUBE SYSTEM SPEC. w/ AUDIO INTEGRATION

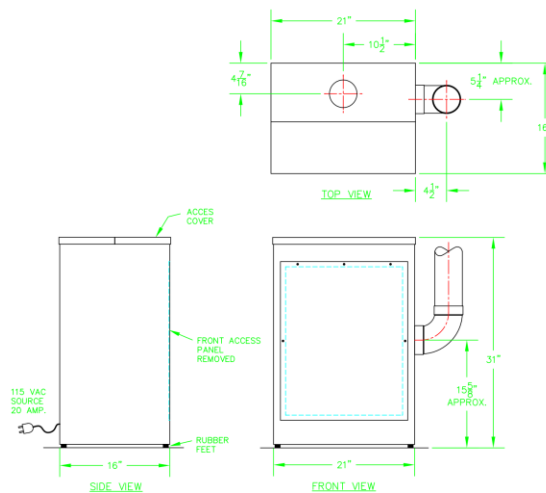
System Requires

1. 4" OD TUBE SYSTEM.
2. Manufacturer's Parts List Identified with the make, model and serial number of the equipment.
3. Control and Wiring Diagram.
4. Installation, operation, and maintenance instructions.
5. Manufacturer's recommended SPARE PARTS list.

BLOWER SPEC:

To be a Powder Coated/Steel Self Contained Blower Unit Designed in Cabinet with Outside Air Compatibility for Moisture Control in Tube Line.

Dimensions 31" Tall 21" Wide 16" Deep



These Dimensions Allow Blower Unit to fit under Cabinets.

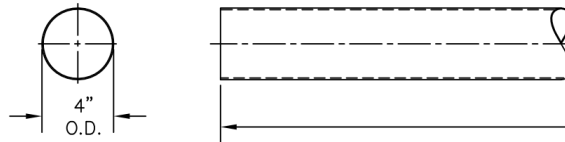
The Blower Must Run "Outside Air" to equalize air temperature from outdoor environment to minimize Moisture inside Guard House.

20 AMP 120 V AC Circuit Required for Blower.

TUBING SPEC:

0.073 ALUM 4" OD

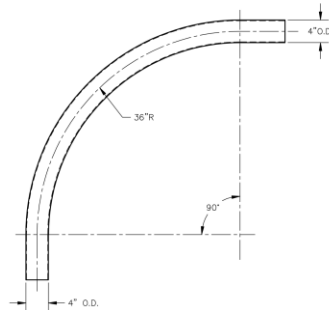
Aluminum tube required for longevity of outdoor and indoor use subject to various climates and moisture levels. Joints should be made with a flange joint with rubber seals to keep moisture out of system and allow for Deflection of the Tube in high winds environment.



BEND SPEC:

4" OD 36" Rad 90 Deg Alum –

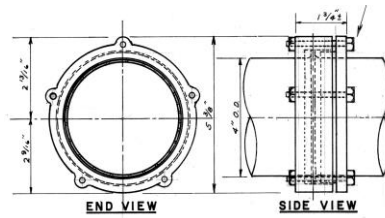
Alum Must be used to match Tubing Wall Thickness and Soft Enough to use Flanging for Joints. Alum for Indoor Outdoor usage with minimal corrosion over time.



MATERIAL: ALUM

COUPLING SPEC:

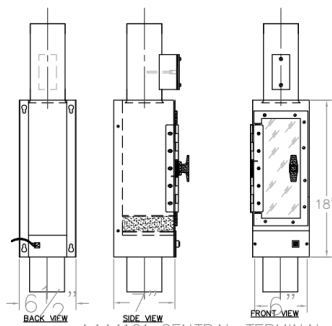
Couplings should be Alum Base for outdoor use. Flanged Joints to allow for Deflection with Building.



TERMINAL CENTRAL:

Central Terminal should be Powder coated/Steel 11-14 GA with Weather Proofing Coating and Air Through Bottom. Door Should be 1/4" Clear Plastic Door with Pull Tight Handle. Carrier Holder For Dispatch on Pressure Setting.

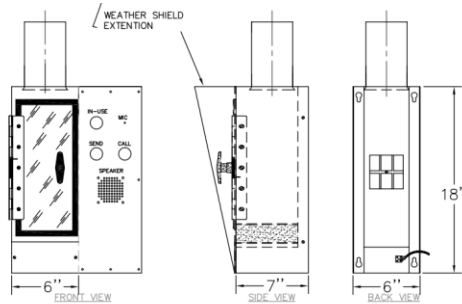
Dimensions of unit should be 6" Wide 18" Tall 7" Deep



TERMINAL SUB:

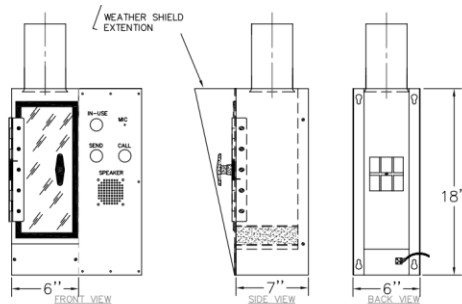
Sub Terminal should be Power Coated/Steel 11-14 GA with Weather Proofing Coating and rain Shielding Design. Audio Must Integrate in Terminal to create single fixable unit.

Dimensions of unit should be 12" Wide 18" Tall 7" Deep Including Audio and Sending Controls.



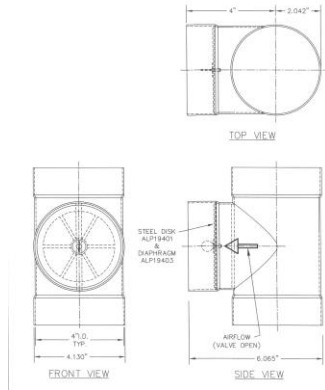
AUDIO SPEC:

Two Way Audio interface activated by button from either side. Weather Resistant durable for outdoor use on the Sub. 24V Low Voltage Cable to Run Sub Station of Audio. Noise Reduction technology necessary for reduction of truck noise. Integrated into Sub Station Assembly.



SUB STATION PRESSURE RELIEFE VALVE:

Pressure relief valve must be present above substation to slow incoming carriers from arriving too fast. Pertinent for Safety of Customer at Drive Thru for Soft Delivery function.



BASE SYSTEM LAYOUT:

Central Station with Blower in Guard House with Sub Station and Audio at Drive Thru Lane.

TUBE LINE//BLOWER//CENTRAL STATION//SUB STATION//AUDIO//PRESSURE RELIEFE//

APPROX DISTANCES FOR SUB STATION HEIGHT

