

# KEL 2020

## OWNER'S MANUAL

-Installation 

-Operation 

\*Timer Setting Instructions

-Safety Precautions 

-System Configuration

\*(Options) 

-Customer Service

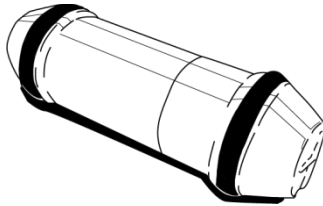
\*Contact Info 





## DO NOT

- Send Open Liquids in the System!
- Let liquid or small parts into the blower pack!
- Send items not enclosed in the Designated System Carrier!



ALL ITEMS SENT IN THIS SYSTEM MUST BE ENCLOSED in Designated SYSTEM SPECIFIED CARRIER A7404

## DO NOT

- Run both blowers at the same time!
- Leave any doors open while operating the system!
- Send more than 3lbs in the Designated Carrier A7404 through the system!
- Send more than 1 carrier at a time through the system!

## In Case of System Error

- See Contact Page and Call Manufacturer regarding Purchasable Replacement Parts for Your KEL2020 System.
- Any user error damages are NOT COVERED under warranty and any user damages during installation are NOT COVERED under warranty.

## CAUTION

- Aluminum tubes Dent and Bend Easily!!! DO NOT Dent/Bend the system tubes because it will require owner to replace tube lengths to allow systems proper operation.
- Aluminum is used for light weight EASE OF INSTALLATION.



## KEL2020

**CONGRATULATIONS ON THE PURCHASE OF YOUR NEW  
COMPLETE POINT TO POINT TUBE SYSTEM!!!**



← -KEL2020 Unboxing of Brand new System  
(What's inside & what to expect from  
Manufacturer)

-KEL2020 Do It Yourself Complete System  
Installation with 4 Tools  
(Knife, Flathead Screw Driver, Nut Driver,  
9/16 Impact Drill)



← -KEL2020 Customizing Tube Length  
“How to” De-Burring Tube After Cut

-KEL2020 Safety & Operation Protocol 101



← -KEL2020 Control Box Timer Setting  
and Trouble Shooting Diagnosis  
(120 V Power supply)

# SETTING TIMER RELAY ON THE ■KEL2020 CONTROL BOX

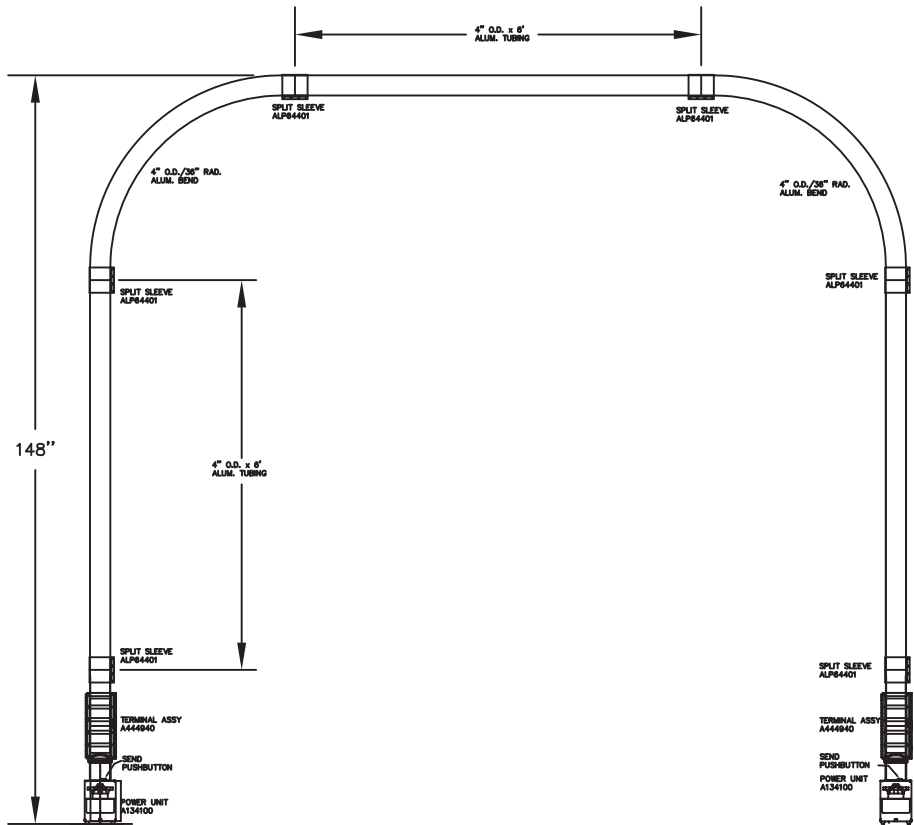


## -SETTING YOUR ■KEL2020 TIMER-

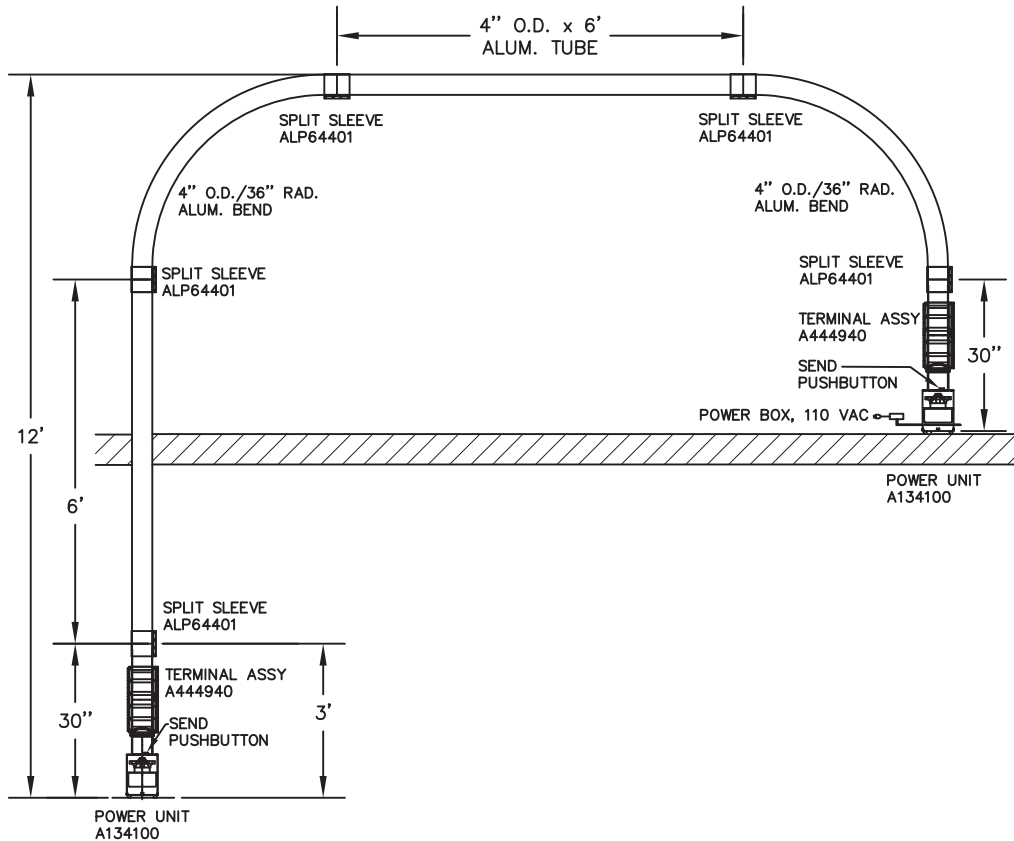
- 1) Hold First Button ([SET] BUTTON as seen above) to Display P1
- 2) PRESS [SET] 4 Times to Display P5
- 3) Press ([Add] BUTTON as seen above) to Display -1
- 4) Press [SET] to select and Display T1
- 5) Press [ADD] or [Enter] to select Timer Duration in Seconds
- 6) Press [SET] Key to Save

(TIMER DEFAULT IS 15 Sec. APPROXIMATELY 100 FT through system!)  
FOR EVERY 10 FT in the System Set the timer an additional 1 Sec.

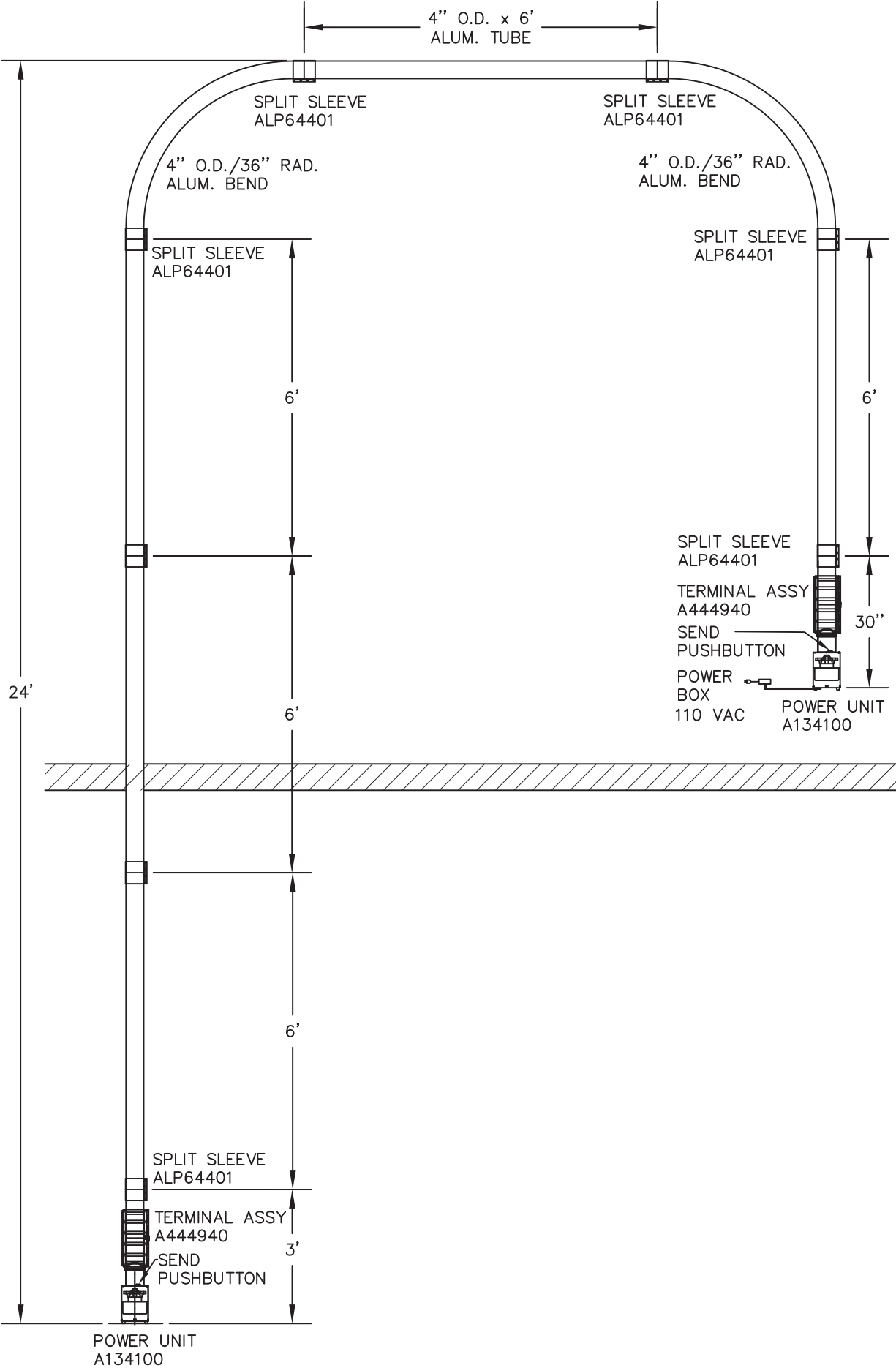
SYSTEM CONFIGURATION #1



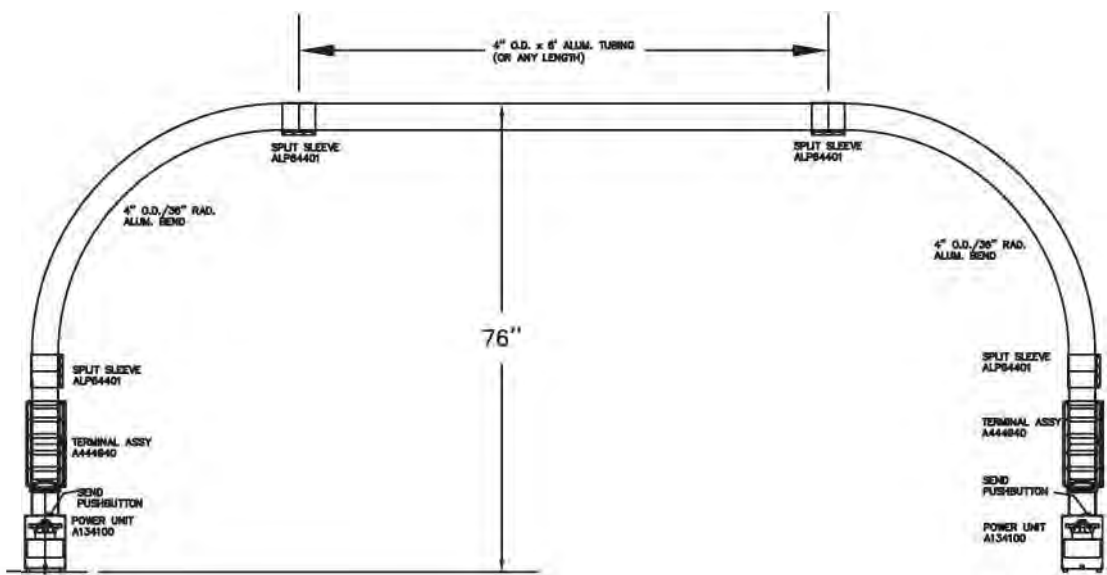
SYSTEM CONFIGURATION #2



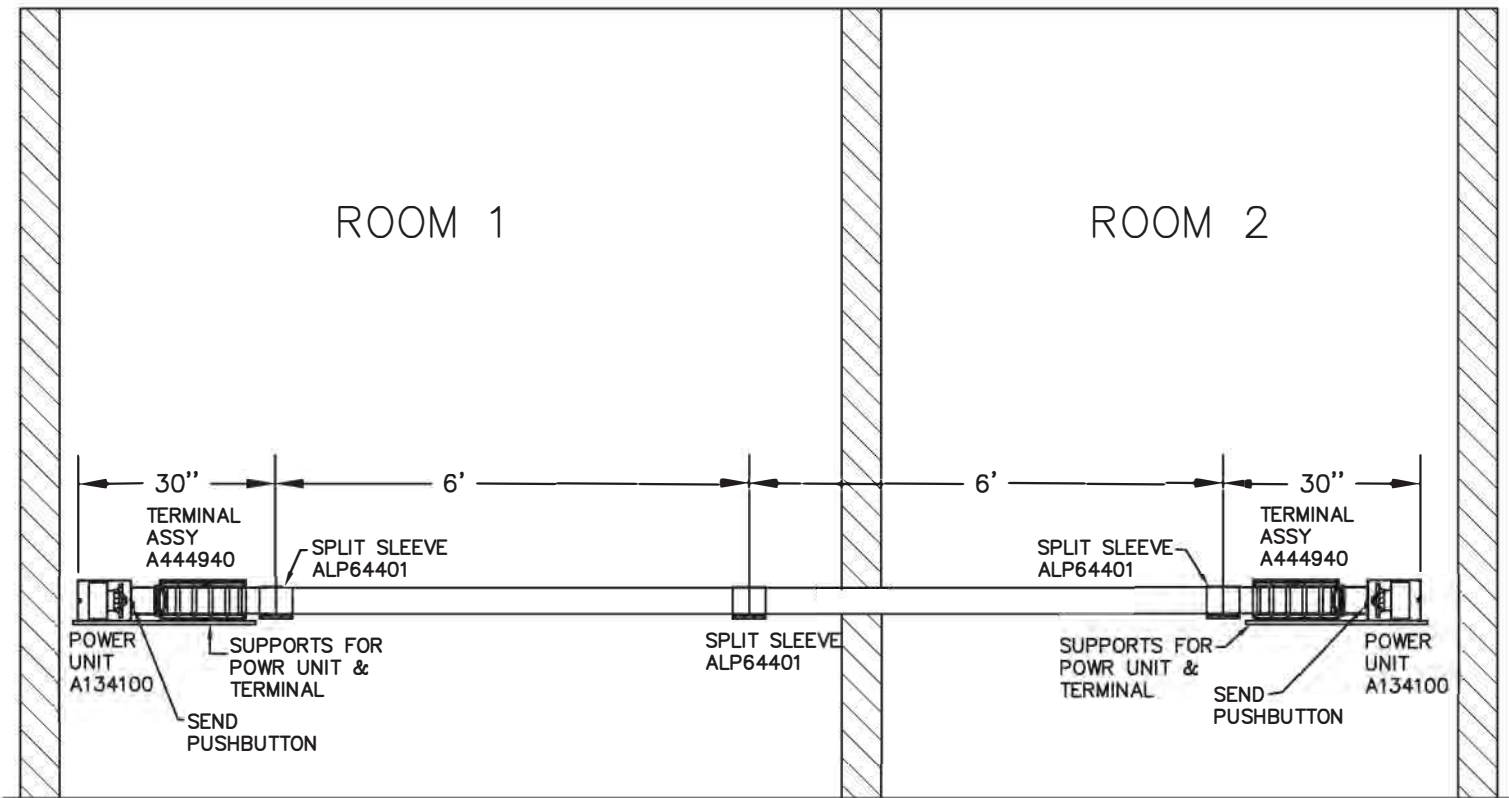
SYSTEM CONFIGURATION #3



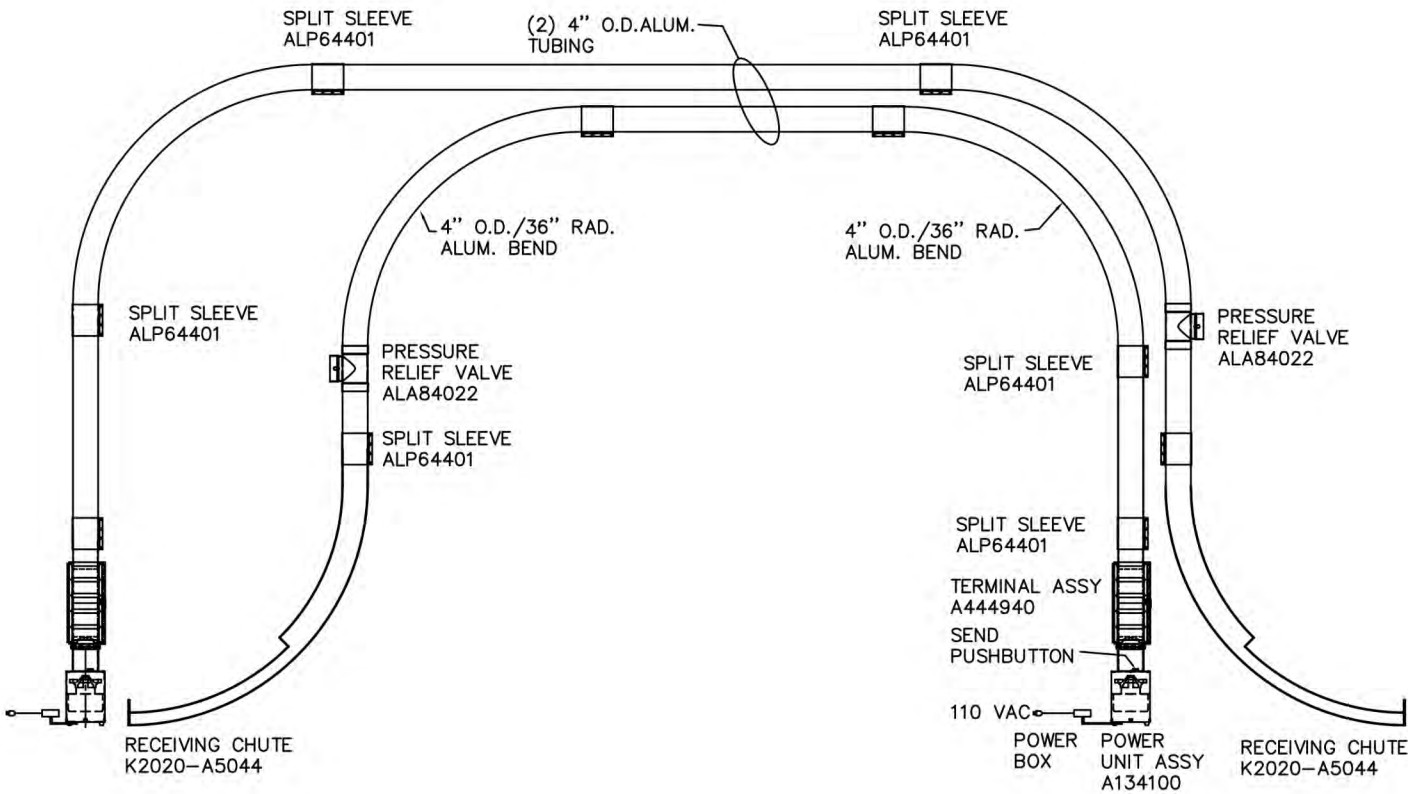
# SYSTEM CONFIGURATION #4



# SYSTEM CONFIGURATION #5

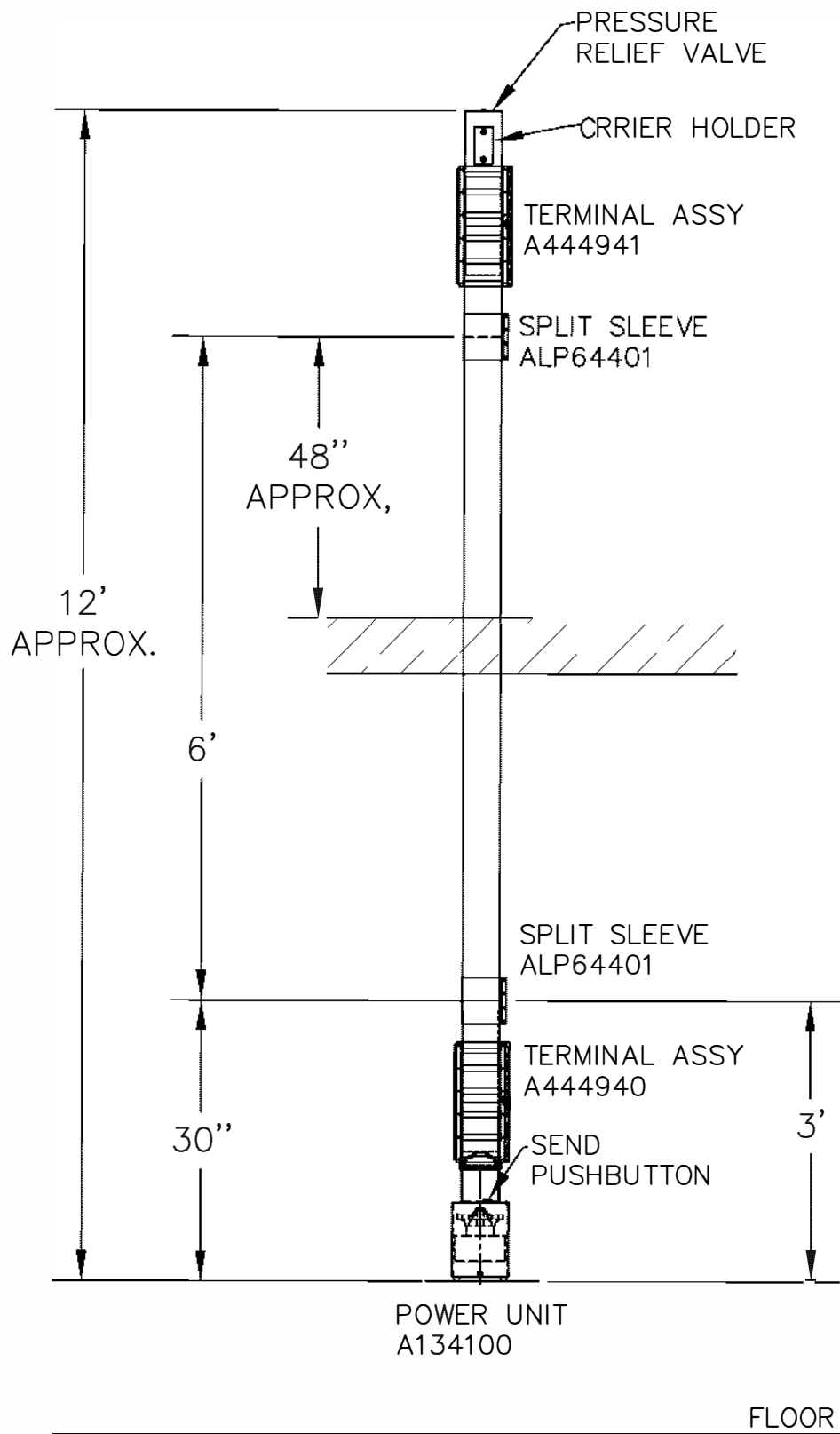


# SYSTEM CONFIGURATION #6

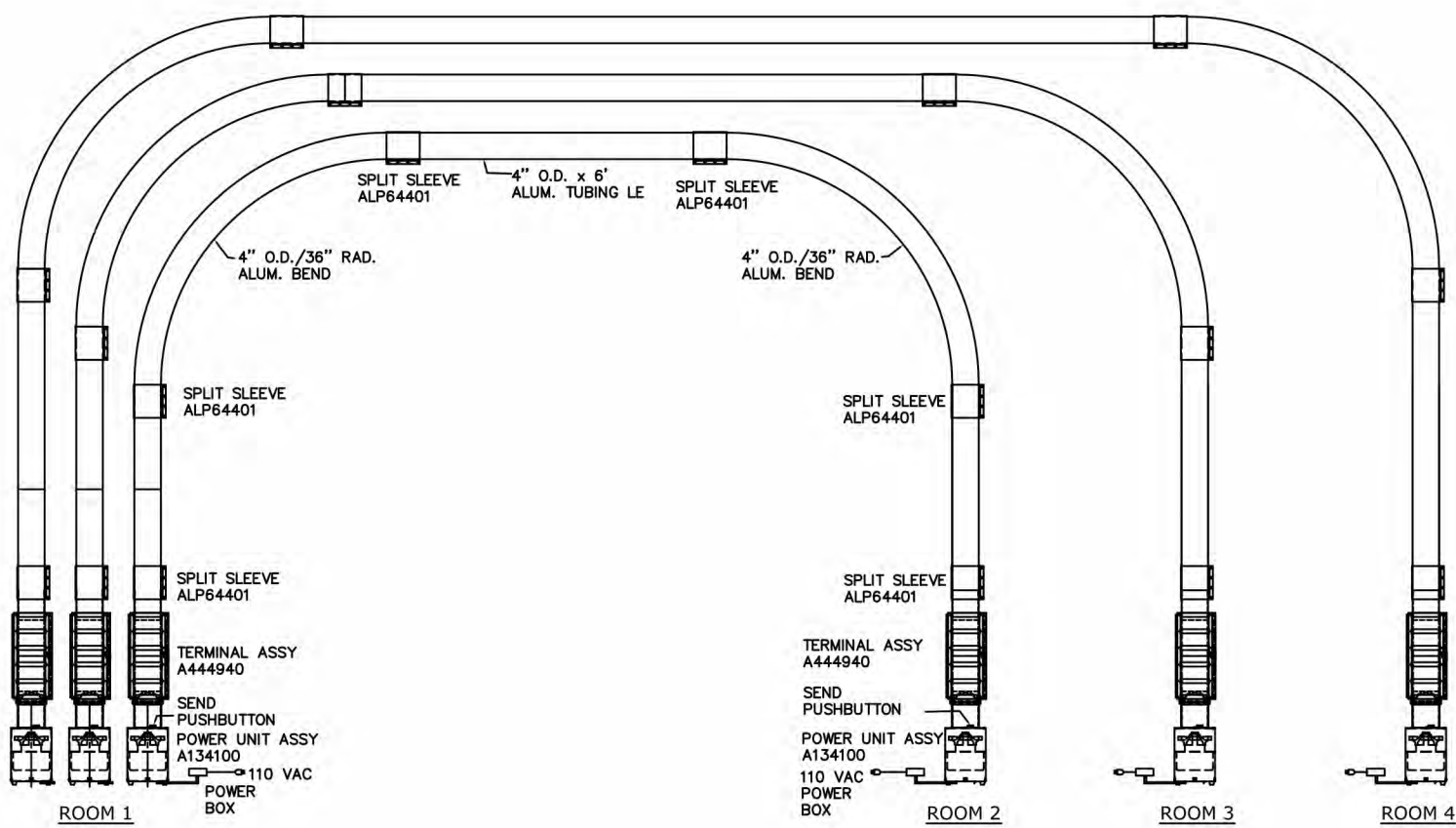




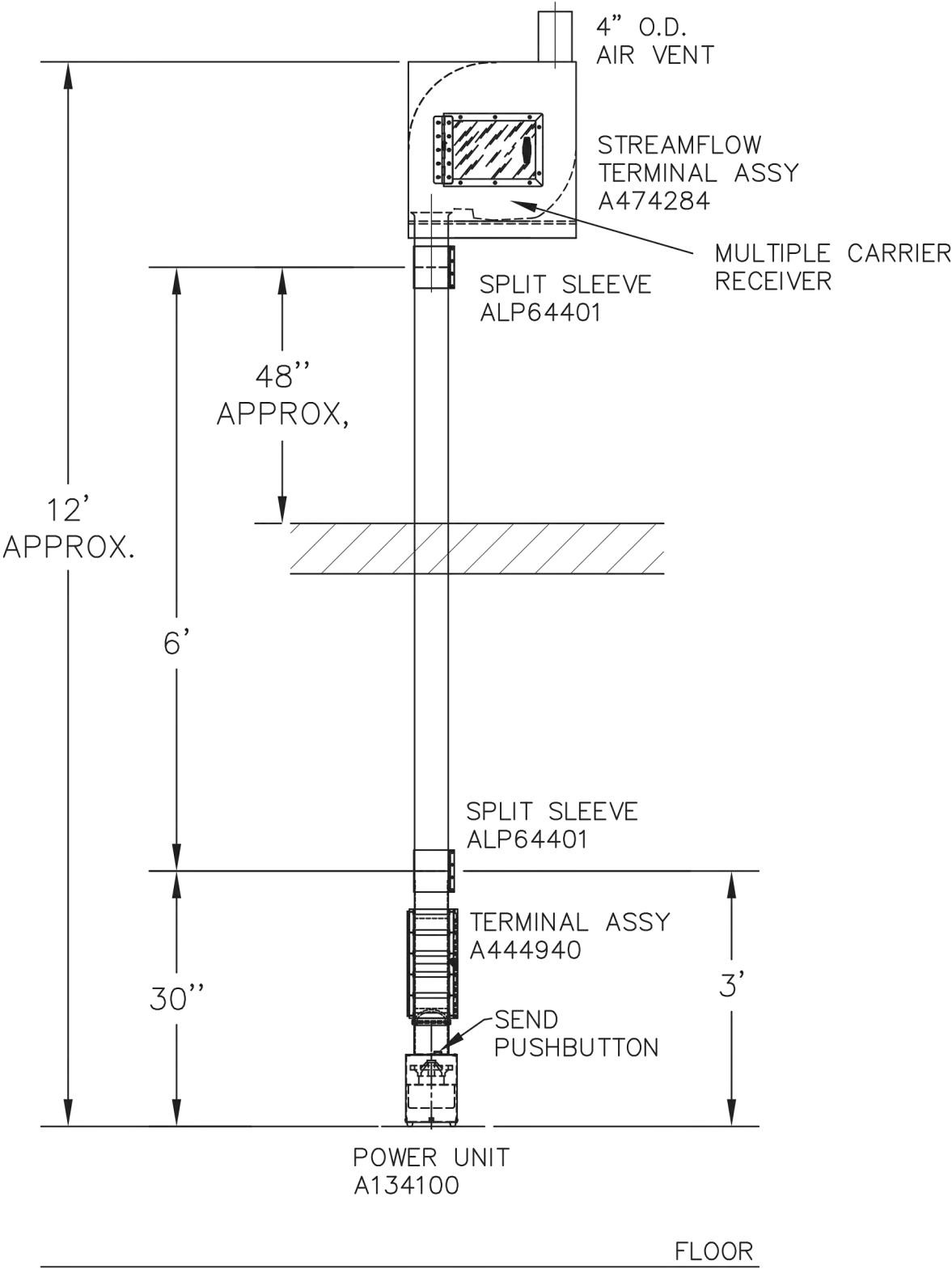
# SYSTEM CONFIGURATION #7



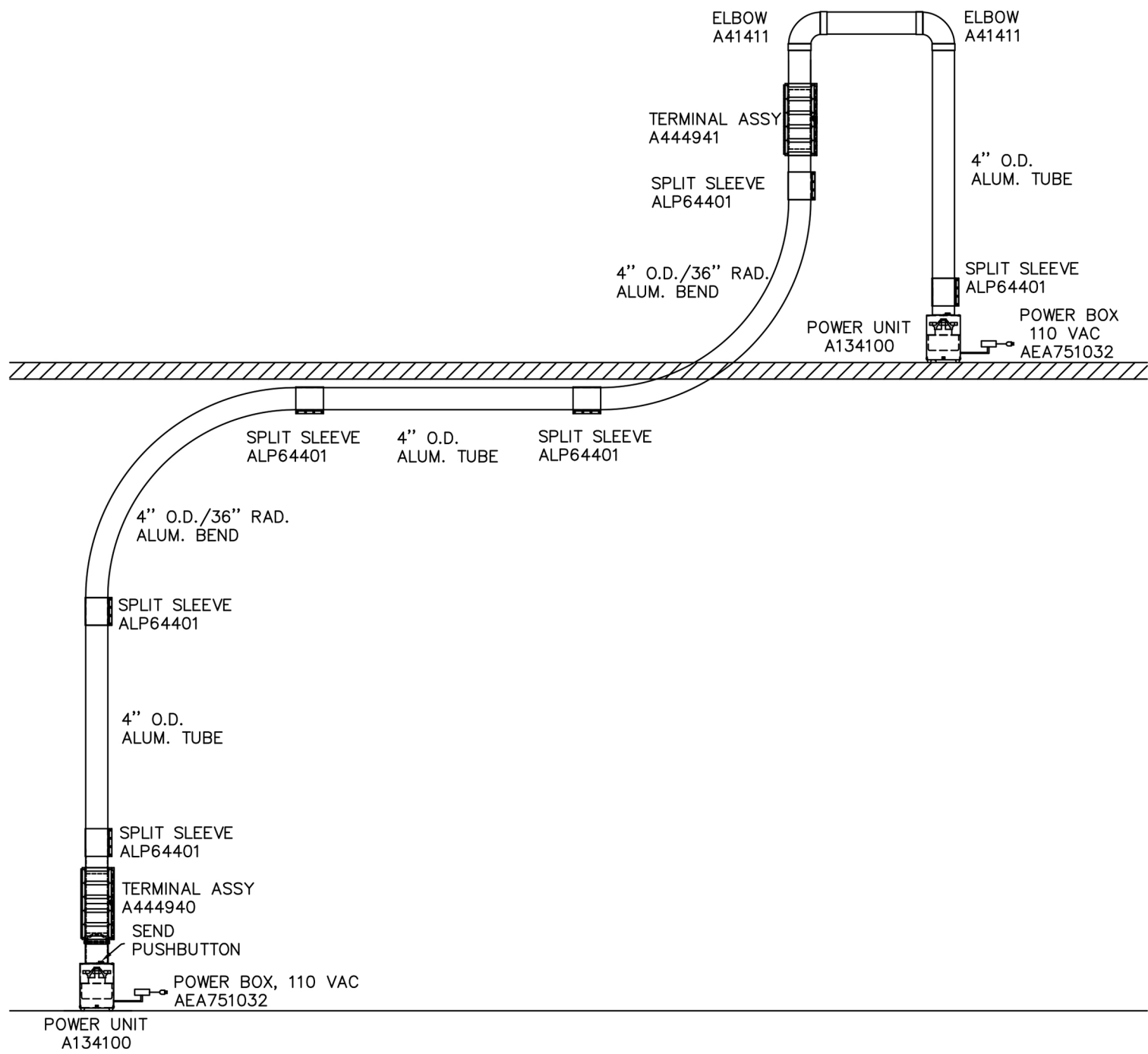
# SYSTEM CONFIGURATION #8



# SYSTEM CONFIGURATION #9

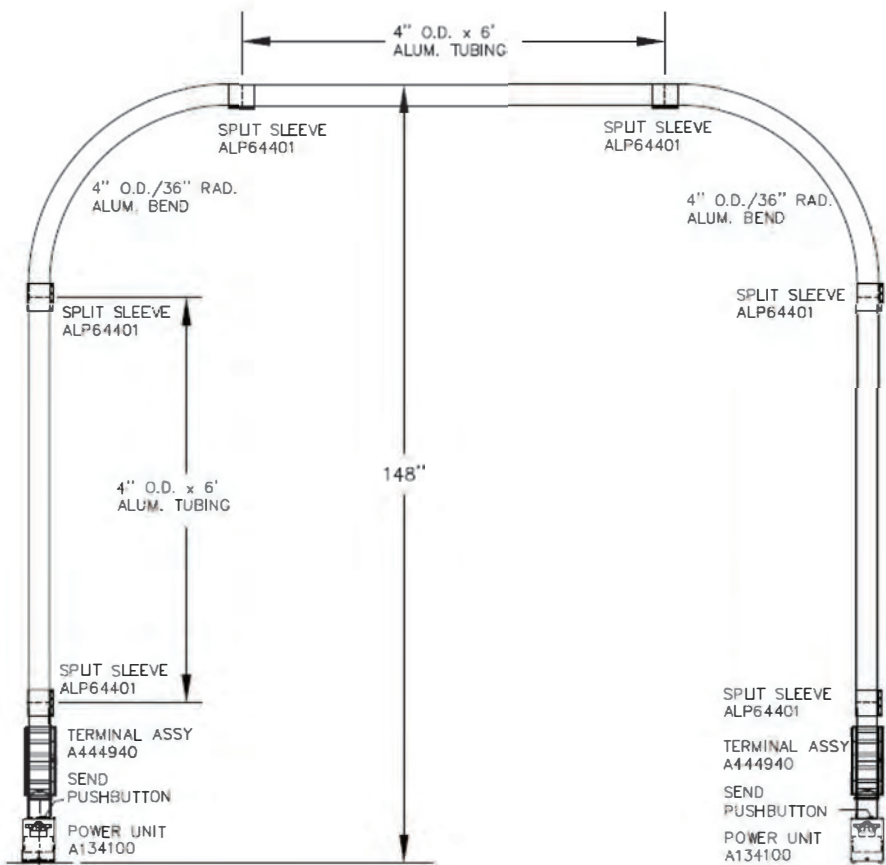


# SYSTEM CONFIGURATION #10



KEL2020 Plug & Play  
Self Install System

4" Point to Point  
Transport System





## CONTACT PAGE

KELLY SYSTEM Inc.

Address:

422 N Western Ave.

Chicago IL, 60612

Phone

1-800-25-TUBES or 312-733-3224

Online Support at Youtube.com

KELLY SYSTEMS Inc. Channel

[www.kellytubesystems.com](http://www.kellytubesystems.com)

# amazon.com

**PLEASE LEAVE US A REVIEW!!!**

